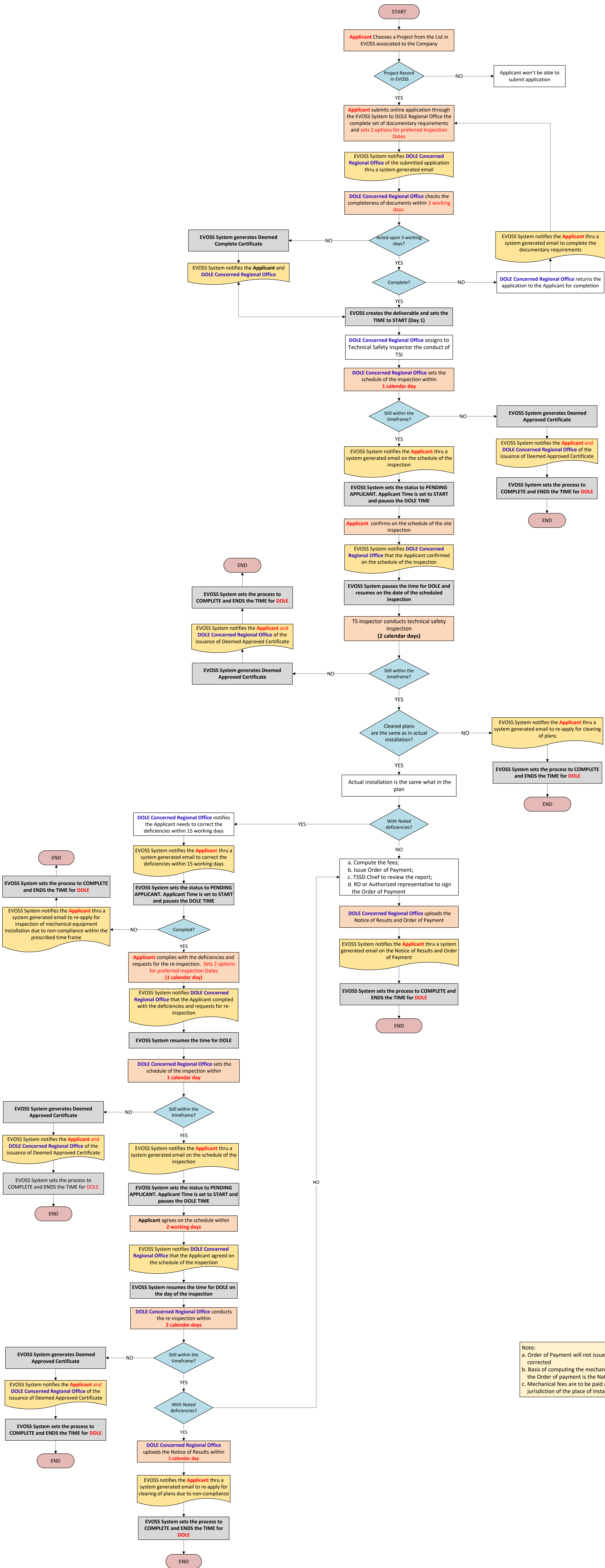


PROCESS FLOW
INSPECTION OF MECHANICAL EQUIPMENT INSTALLATION
(DOLE Regional Offices)



Note:
a. Order of Payment will not issued unless the deficiency is corrected
b. Basis of computing the mechanical fees in preparing the Order of payment is the National Building Code
c. Mechanical fees are to be paid at the LGU who has jurisdiction of the place of installation

TOTAL PROCESSING TIME:
7 Calendar days